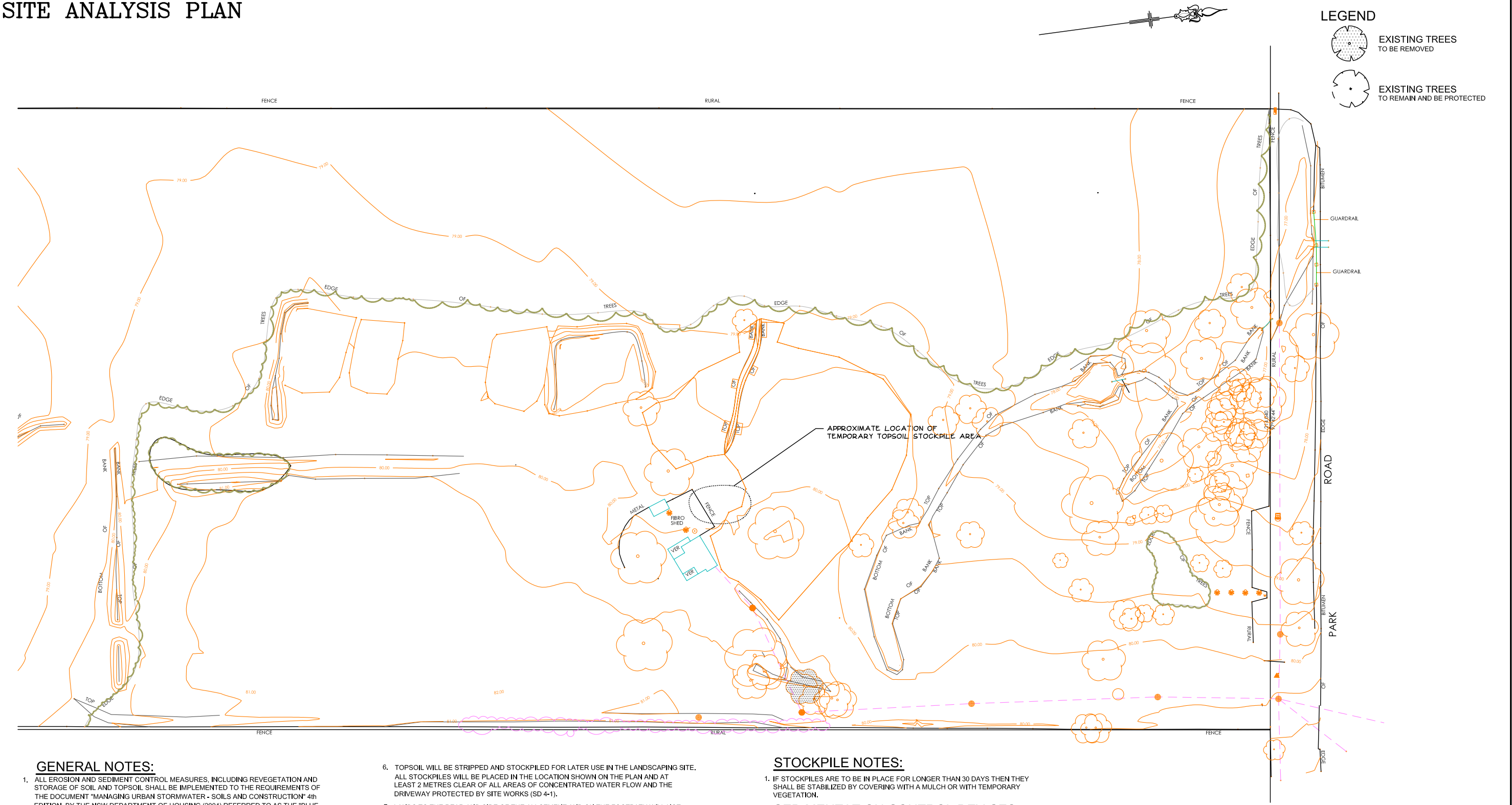


SITE MANAGEMENT PLAN
SITE ANALYSIS PLAN



GENERAL NOTES:

- ALL EROSION AND SEDIMENT CONTROL MEASURES, INCLUDING REVEGETATION AND STORAGE OF SOIL AND TOPSOIL SHALL BE IMPLEMENTED TO THE REQUIREMENTS OF THE DOCUMENT "MANAGING URBAN STORMWATER - SOILS AND CONSTRUCTION" 4th EDITION, BY THE NSW DEPARTMENT OF HOUSING (2004) REFERRED TO AS THE "BLUE BOOK". MEASURES TO BE INSTALLED PRIOR TO COMMENCEMENT OF CONSTRUCTION, TO BE PROPERLY MAINTAINED FOR DURATION OF WORKS, AND SUITABLY DECOMMISSIONED UPON COMPLETION OF CONSTRUCTION WORKS.
- SITE WORKS WILL NOT START UNTIL THE EROSION AND SEDIMENT CONTROL WORKS OUTLINED IN THE PLAN ARE INSTALLED AND FUNCTIONAL.
- ENTRY AND EXIT TO THE SITE WILL BE CONFINED TO ONE STABILISED LOCATION. FENCING WILL BE USED TO RESTRICT ALL VEHICULAR MOVEMENTS TO THE STABILISED ENTRANCE. STABILISATION WILL BE ACHIEVED BY EITHER:
 - CONSTRUCTING A CONCRETE DRIVEWAY TO THE STREET
 - CONSTRUCTING A STABILISED SITE ACCESS, ACCORDING TO STANDARD DRAWING SD 5-7 OR ACCORDING TO ANOTHER SUITABLE TECHNIQUE APPROVED BY COUNCIL.
- SEDIMENT CONTROL (SD 6-7) AND BARRIER FENCES WILL BE INSTALLED AS REQUIRED
- MESH AND GRAVEL "SAUSAGE" PROTECTION (SD 6-8) WILL BE PROVIDED TO PROTECT GUTTER INLETS NEAR THE ALLOTMENT.

- TOPSOIL WILL BE STRIPPED AND STOCKPILED FOR LATER USE IN THE LANDSCAPING SITE. ALL STOCKPILES WILL BE PLACED IN THE LOCATION SHOWN ON THE PLAN AND AT LEAST 2 METRES CLEAR OF ALL AREAS OF CONCENTRATED WATER FLOW AND THE DRIVEWAY PROTECTED BY SITE WORKS (SD 4-1).
- LANDS TO THE REAR AND SIDE OF THE ALLOTMENT AND ON THE FOOTPATH WILL NOT BE DISTURBED DURING WORKS EXCEPT WHERE ESSENTIAL, E.G. DRAINAGE WORKS ACROSS THE FOOTPATH. WHERE WORKS ARE NECESSARY, THEY WILL BE UNDERTAKEN IN SUCH A WAY TO LEAVE THE LANDS IN A CONDITION OF HIGH EROSION HAZARDS FOR AS SHORT A PERIOD AS PRACTICABLE. THEY WILL BE REHABILITATED AS SOON AS POSSIBLE. STOCKPILES WILL NOT BE PLACED ON THESE LANDS AND THEY WILL NOT BE USED AS VEHICLE PARKING AREAS.
- APPROVED BINS FOR CONCRETE AND MORTAR SLURRIES, PAINTS, ACID WASHINGS AND LITTER WILL BE PROVIDED AND ARRANGEMENTS MADE FOR COLLECTION AND DISPOSAL.
- GUTTERING WILL BE CONNECTED TO THE STORMWATER SYSTEM AS SOON AS PRACTICABLE. TOPSOIL WILL BE RESPREAD AND ALL DISTURBED AREAS WILL BE REHABILITATED WITHIN 20 WORKING DAYS OF THE COMPLETION OF WORKS. RESPREAD TOPSOIL TO 100mm DEPTH (MIN) ON BARE SOIL SURFACES AND REVEGETATED.
- ALL EROSION AND SEDIMENT CONTROLS WILL BE CHECKED AT LEAST WEEKLY AND AFTER RAIN TO ENSURE THEY ARE MAINTAINED IN A FULLY FUNCTIONAL CONDITION.

STOCKPILE NOTES:

- IF STOCKPILES ARE TO BE IN PLACE FOR LONGER THAN 30 DAYS THEN THEY SHALL BE STABILIZED BY COVERING WITH A MULCH OR WITH TEMPORARY VEGETATION.

SEDIMENTATION CONTROL DEVICES:

- SILT FENCES SHALL BE CONSTRUCTED BY STRETCHING A FILTER FABRIC (PROPEX OR SIMILAR) BETWEEN POSTS AT 2m CENTRES. FABRIC SHALL BE BURIED 150mm ALONG ITS LOWER EDGE.

SPECIAL NOTES:

- LOCATION AND EXTENT OF SOIL AND WATER MANAGEMENT DEVICES IS DIAGRAMMATIC ONLY AND THE ACTUAL REQUIREMENTS SHALL BE CONFIRMED ON SITE.
- CONFORMITY WITH THIS PLAN SHALL IN NO WAY REDUCE THE RESPONSIBILITY OF THE CONTRACTOR TO PROTECT AGAINST WATER DAMAGE DURING THE COURSE OF THE CONTRACT.
- MANAGEMENT DEVICES SHALL BE MAINTAINED ON A REGULAR BASIS. WHERE CLEANING IS REQUIRED, THE SEDIMENT SHALL BE REMOVED TO OFFSITE TO A SUITABLE POINT OF DISPOSAL.
- NO TREES SHALL BE REMOVED WITHOUT COUNCIL'S CLEARANCE.

F		
E		
D		
C	TREE TO BE REMOVED	7/10/20
B	NO CHANGE	26/4/20
A	FIRST ISSUE	28/4/20
No.	AMENDMENT	DATE


Bio Engineered Solutions Pty. Ltd.

Landscape design and Environmental Management

3 TERRYMONT RD
WARRIMOO, 2774

EMAIL: klc_nrk@dx.com.au

A.B.N. 83 104965219
PH: (02) 4753 6614



DESIGNED KN

DRAWN KN

CHECKED _____

APPROVED _____ DATE _____

SCALES:

N.T.S.

CLIENT:

MR ELLIE BARIKHAM
& FAMILY

PROPOSED RECYCLING FACILITY

LOT 5 DP 655046

344 PARK ROAD, WALLACIA

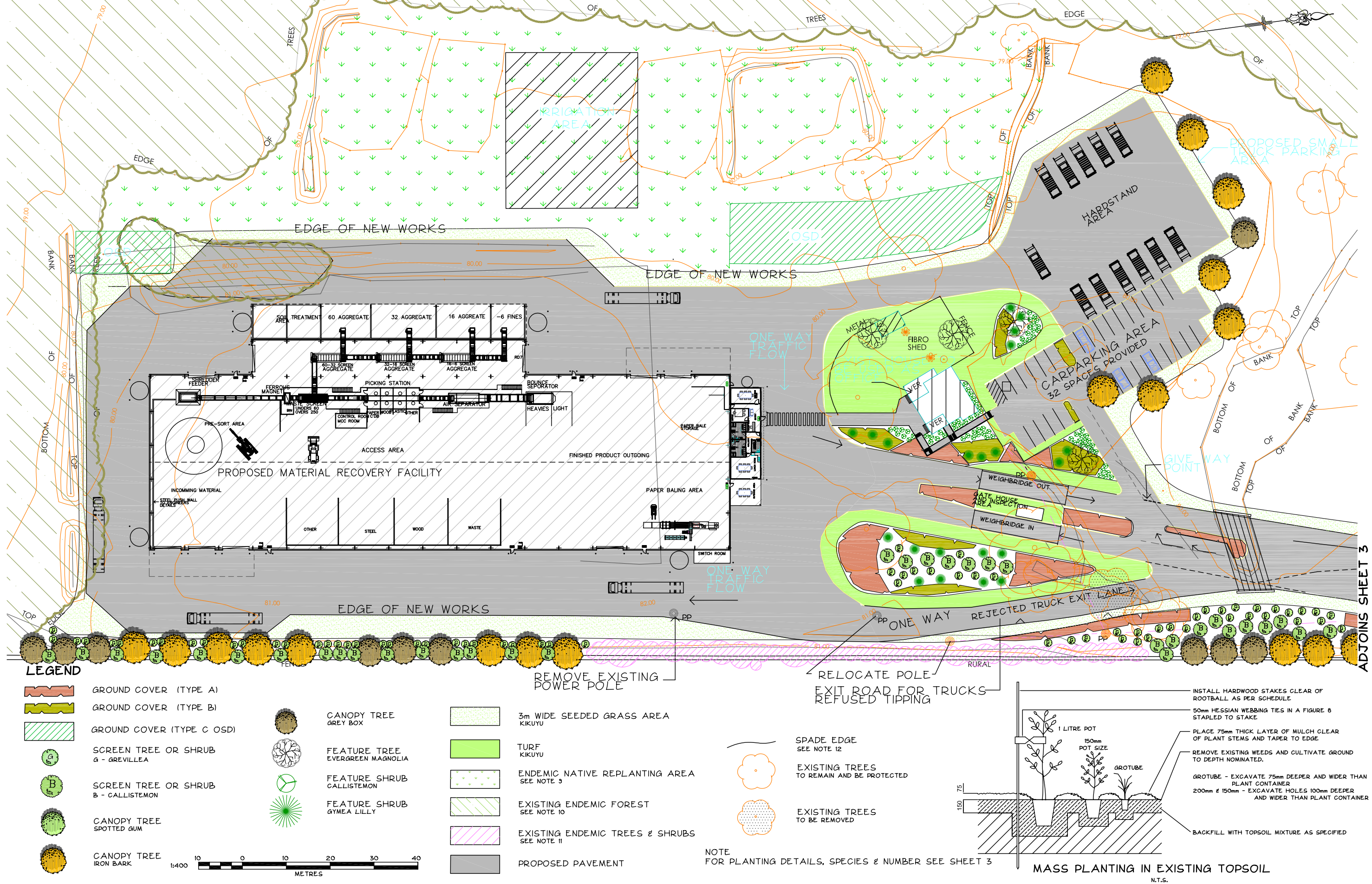
LANDSCAPE CONCEPT PLAN

PLAN No.
1853LAN1

FILE No.
1853LAN

SHEET 1 OF 3 SHEETS

LANDSCAPE CONCEPT PLAN



F		
E		
D		
C	DRIVEWAYS REVISED OSD ADDED	7/10/20
B	DRIVEWAY AND PATHS REVISED	26/4/20
A	FIRST ISSUE	2/4/20
No.	AMENDMENT	DATE

Bio Engineered Solutions Pty. Ltd.

Landscape design and Environmental Management

3 TERRYMOOT RD
WARRIMOO, 2774

EMAIL: klc_nak@dx.com.au

AB.N. 83 104965219
PH: (02) 4753 6614

DESIGNED KN

DRAWN KN

CHECKED _____

APPROVED _____ DATE _____

SCALE: 1:400

CLIENT: MR ELLIE BARIKHAM & FAMILY

PROPOSED RECYCLING FACILITY

LOT 5 DP 655046

344 PARK ROAD, WALLACIA

LANDSCAPE CONCEPT PLAN

PLAN No. 1853L AN2 C

FILE No. 1853LAN

SHEET 2 OF 3 SHEETS

LANDSCAPE CONCEPT PLAN

The plan shows a large area of existing grassland with scattered trees. A proposed parking area is indicated in the top left. A road with a one-way traffic flow is shown at the bottom, with a row of trees to be removed. The plan includes various labels for topography, boundaries, and existing features.

EXISTING GRASSLAND

PROPOSED SMALL TRUCK PARKING AREA

REMOVE ROW OF EXISTING PALMS

ONE WAY

ONE WAY

ADJOINS SHEET 2

1:400

10 0 10 20 METRES

INSTALL HARDWOOD STAKES AS PER SCHEDULE POINTED AT ONE END CLEAR OF ROOTBALL

TWO 50mm WIDE RECYCLED PLASTIC WEBBING TIES IN A FIGURE OF 8 STAPLED TO STAKE

75mm LAYER OF MULCH PLACED CLEAR OF PLANT STEMS TAPERING TO TIMBER EDGE

DESIGN GROUND LEVEL

FINAL 300mm BACKFILL TO BE TOPSOIL MIXTURE COMPRISING OF 7 PARTS SANDY LOAM & 3 PARTS COMPOST pH RANGE 5.5-7.0

BACKFILL WITH SOIL MIXTURE CONTAINING 8 PARTS SANDY LOAM AND 2 PARTS RIVER SAND, pH RANGE 5.5-7.0

PLANTING HOLE 1mx1mx100mm DEEPER THAN ROOTBALL

BREAK UP SIDES AND BASE OF PLANTING HOLE TO 100mm

45L - 75L TREES IN EXISTING TOPSOIL

N.T.S.

BOTANICAL NAME	COMMON NAME	MATURE HEIGHT	POT SIZE	APPROX NUMBERS
GROUND COVER (TYPE A)				
<i>Pennisetum alopecuroides</i> "Nafray"	Swamp Foxtail Grass	60-70cm	Tube	2600
GROUND COVER (TYPE B)				
<i>Lomandra</i> "Tanika"	<i>Lomandra</i>	50-60cm	Tube	655
GROUND COVER (TYPE C OSD)				
<i>Juncus usitatus</i>	Matt rush	60-70cm	Tube	2000
<i>Isolepis nodosa</i>	Knobby Club Rush	70-80cm	Tube	2000
SCREEN TREES & SHRUBS				
<i>Grevillea</i> "Robyn Gordon"	<i>Grevillea</i>	1.0-1.5m	Tube	30
<i>Grevillea</i> "Honey Gem"	<i>Grevillea</i>	3.0-5.0m	Tube	30
<i>Grevillea</i> "Ivanhoe"	<i>Grevillea</i>	3.0-5.0m	Tube	31
<i>Callistemon viminalis</i> "Hannah ray"	Bottlebrush	3.0-5.0m	Tube	13
<i>Callistemon viminalis</i> "Kings Park Special"	Bottlebrush	3.0-4.0m	Tube	13
<i>Callistemon citrinus</i> "Reeves Pink"	Bottlebrush	2.0-3.0m	Tube	12
FEATURE SHRUBS				
<i>Callistemon</i> "Little John"	Dwarf Bottlebrush	1.0-1.5m	150mm	72
<i>Doranthus excelsia</i>	Gymea Lilly	1.0-1.5m	150mm	21
CANOPY TREE				
<i>Eucalyptus crebra</i>	Narrow leaved Ironbark	20-30m	45 litre	18
<i>Eucalyptus mollucana</i>	Grey Box	25-30m	45 litre	13
<i>Eucalyptus maculata</i>	Spotted Gum	20-30m	45 litre	14
FEATURE CANOPY TREE				
<i>Magnolia grandiflora</i>	Evergreen Magnolia	8-10m	45 litre	4

BOTANICAL NAME	COMMON NAME	MATURE HEIGHT	POT SIZE	APPROX NUMBERS
TREES & SHRUBS				
<i>Eucalyptus fibrosa</i>	Broad leaved Ironbark	20-30m	Tube	278
<i>Eucalyptus moluccana</i>	Grey Box	25-30m	Tube	278
<i>Eucalyptus tereticornis</i>	River Red Gum	25-30m	Tube	278
<i>Acacia falcata</i>		5-6m	Tube	260
<i>Acacia parramattensis</i>		5-6m	Tube	260
<i>Bursaria spinosa</i>		2-3m	Tube	260
<i>Dillwynia seiberi</i>		1-2m	Tube	260
<i>Lissanthe strigosa</i>		1-2m	Tube	260
<i>Melaleuca decora</i>		3-4m	Tube	260
<i>Melaleuca nodosa</i>		3-4m	Tube	260
<i>Pomax umbellata</i>		1-2m	Tube	260
GROUNDCOVER - GRASSES, FORBES & FERNS				
<i>Aristida vagans</i>			Seed	
<i>Austrodanthonia tenuior</i>			Seed	
<i>Brunoniella australis</i>			Seed	
<i>Cheilanthes seiberi</i> subs. <i>sieberi</i>			Seed	
<i>Desmodium varians</i>			Seed	
<i>Dianella longifolia</i>			Seed	
<i>Dichondra repens</i>			Seed	
<i>Echopogon ovalis</i>			Seed	
<i>Entolasia stricta</i>			Seed	
<i>Glycine clandestina</i>			Seed	
<i>Goodenia hederaceae</i> subs. <i>hederaceae</i>			Seed	
<i>Harstenbergia violacea</i>			Seed	
<i>Hydrocotyle penduncularis</i>			Seed	
<i>Laxmania gracilis</i>			Seed	
<i>Lepidosperma laterale</i>			Seed	
<i>Lomandra multiflora</i> subsp. <i>multiflora</i>			Seed	
<i>Microlaena stipoides</i> subsp. <i>stipoides</i>			Seed	
<i>Panicum simile</i>			Seed	
<i>Pratia purpurascens</i>			Seed	
<i>Themeda australis</i>			Seed	
<i>Tricoryne elatior</i>			Seed	
<i>Whalenbergia gracilis</i>			Seed	

ENDEMIC PLANTING THE STRATA SHOULD AIM TO REACH THE
FOLLOWING DENSITIES AFTER 2 YEARS
1 TREE PER 10 SQM
1 SHRUB PER 4 SQM
4 GROUND COVERS PER 1 SQM

	GROUND COVER (TYPE A)
	GROUND COVER (TYPE B)
	GROUND COVER (TYPE C OSD)
	SCREEN TREE OR SHRUB A - GREVILLEA
	SCREEN TREE OR SHRUB B - CALLISTEMON
	CANOPY TREE SPOTTED GUM
	CANOPY TREE IRON BARK
	CANOPY TREE GREY BOX
	FEATURE TREE EVERGREEN MAGNOLIA
	FEATURE SHRUB CALLISTEMON
	FEATURE SHRUB GYMEA LILLY
	3m WIDE SEEDED GRASS AREA KIKUYU
	TURF KIKUYU
	ENDEMIC NATIVE REPLANTING AREA SEE NOTE 9
	EXISTING ENDEMIC FOREST SEE NOTE 10
	EXISTING ENDEMIC TREES & SHRUBS SEE NOTE 11
	PROPOSED PAVEMENT
	SPADE EDGE SEE NOTE 12
	EXISTING TREES TO REMAIN AND BE PROTECTED
	EXISTING TREES TO BE REMOVED

1. HARDWOOD STAKES TO BE 38 x 38 x 1800
2. AN APPROVED SLOW RELEASE PELLET TYPE FERTILISER HAVING AN NPK RATIO OF 18:13:1 EQUIVALENT TO OSMOCOTE 12 - 14 MONTH SLOW RELEASE FERTILISER APPLIED AT THE RATE SPECIFIED BY THE MANUFACTURER SHALL BE USED
3. ALL GARDEN AREAS TO BE FILLED WITH APPROVED TOP SOIL AT MINIMUM 150mm DEPTH
4. TOPSOIL SHOULD CONFORM TO AS 4419 "SOILS FOR LANDSCAPING AND GARDEN" AND TO BE SUITABLE FOR NATIVE PLANT GROWTH WITH LOW PHOSPHORUS CONTENT, CONTAINING ORGANIC MATTER AND FREE FROM STONES OR OTHER MATERIAL EXCEEDING 25mm IN ANY DIMENSION.
5. IT IS THE CONTRACTORS RESPONSIBILITY TO CHECK AND ADJUST SOIL pH AS REQUIRED
6. IN ALL GARDEN AREAS, EXISTING SOIL TO BE DEEP RIPPED TO 200mm AND CULTIVATED TO 100mm
7. WATERING REGIME. THE FIRST MONTH AFTER PLANTING IS THE CRITICAL TIME FOR WATERING. THE PLANTS REQUIRE HEAVY WATERING EVERY 3 DAYS. 50mm OF WATER PER WEEK AS A MINIMUM SHOULD BE ADOPTED AS A GENERAL GUIDE
8. MULCH PLANTING BEDS TO A MINIMUM OF 50 - 75mm AS REQUIRED MULCH TO BE COARSE GRADE HARDWOOD MULCH, CONFORMING TO AS 4454 "COMPOSTS, SOIL CONDITIONERS AND MULCHES"
9. ENDEMIC NATIVE REPLANTING AREA. AREA TO BE REHABILITATED EXISTING SOIL TO BE TESTED & AMELIORATED.
NATIVE TUBE & SEED MIX APPLIED TO AMELIORATED TOPSOIL. SEE TABLE FOR SPECIES
10. EXISTING ENDEMIC FOREST TO BE PROTECTED AND WEEDED
11. EXISTING ENDEMIC TREES AND SHRUBS. AREA TO BE WEEDED AND CULTIVATED WHERE POSSIBLE. A VARIETY OF GREVILLAEAS TO BE PLANTED IN GAPS BETWEEN EXISTING TREES TO THICKEN SCREENING
AREA TO BE MULCHED TO 75mm DEPTH
12. SPADE EDGE TO BE USED BETWEEN MASS PLANTING & TURF AREAS